



 **magicwand**[®]
PLUS

Instructions & User Manual

Personal Massager
Model HV-265

CONTENTS

■ IMPORTANT SAFETY INSTRUCTION	2
■ IDENTIFYING KEY PARTS	6
■ POWERING THE MAGIC WAND PLUS	7
■ OPERATING THE MAGIC WAND PLUS	7
■ CARE AND CLEANING	9
■ STORING THE MAGIC WAND PLUS	9
■ SPECIFICATIONS	9
■ TROUBLESHOOTING	10
■ WARRANTY	11

⚠ IMPORTANT INFORMATION



- Please read and follow the "IMPORTANT SAFETY INSTRUCTIONS" below before using this product.
- After reading, please save or keep this manual in safe location and review it when necessary.
- This product is for household use only and is not intended to address or treat any medical condition.
- Please do not use it for any other purpose. Improper usage may cause serious accidents.

⚠ IMPORTANT SAFETY INSTRUCTIONS

Signal Word Definitions and Meanings

- The definitions of the signal words used in this manual are separated into 4 levels according to the degree of danger (or level risk) as outlined below.

<Signal Word>

<Meaning>

⚠ DANGER

Indicates a hazardous situation which, if not avoided, will result in death or serious injury.

⚠ WARNING

Indicates a hazardous situation which, if not avoided could result in death or serious injury.

⚠ CAUTION

Indicates a hazardous situation which, if not avoided could result in minor or moderate injury.

NOTICE

Other Consideration

- When using an electrical appliance, basic precautions should always be followed, including the following:

Read all instructions before using this appliance.

IMPORTANT SAFETY INSTRUCTIONS

DANGER

To reduce the risk of electric shocks, burns, fire or injury:

1. Be extremely careful never to expose the product to any liquid, including body fluids water, lubricants or cleaners. Serious injury may occur if fluid enters into the product. This product is NOT waterproof.
2. For external use only. Do not insert into any body cavity.
3. Always unplug this product from the outlet immediately after using and before cleaning.
4. Do not use while bathing or in the shower.
5. Do not place or store massager where it can fall or be pulled into a tub or sink.
6. Do not place in or drop into water or other liquid.
7. Do not reach for massager that has fallen into water. Unplug it immediately.
8. Do not use on any wet body part; do not use in the rain.
9. Do not wash the massager with water or boiling liquids.
10. Never operate the massager if it has a damaged cord or plug, if it is not working properly, if it has been dropped or damaged, or dropped into water. Immediately contact the distributor to request information about warranty replacement – www.magicwandoriginal.com/warranty

WARNING

**To reduce the risk of burns, fire, electric shock, or injury to persons.
Before using this product, consider if it is safe for you:**

1. The following persons should consult a doctor before use.
 - Persons with self-contained medical electric devices such as pacemaker.
 - Persons with malignancy.
 - Persons who have heart conditions.
 - Women who are/or may be pregnant or have recently given birth.
 - Persons who are perpetually disabled by advanced peripheral circulatory disturbance, caused by, for instance, diabetes.
 - Persons who have skin wounds or who have extreme skin sensitivity.
 - Persons who require bed rest.
 - Persons who have a body temperature higher than 38°C(100.4°F), e.g., suffering from acute inflammation, malaise, chill and/or blood pressure change.
 - Persons who have osteoporosis or acute pain, e.g., from spine fracture, sprain and / or muscle strain.
 - Persons who have a hernia of intervertebral disk.
 - Persons who have deformed spine.
 - Persons who are under going medical treatment.
2. Persons who have been told by a doctor to avoid massage should not use this product.
(Example : thrombosis, massive aneurism, acute varietal hemorrhage, various dermatitis and infection of skin including subcutis inflammation etc.)
3. Persons who are unable to operate this product by themselves should not use this product.
4. For adult use only. Keep this product out of reach of children.

⚠ IMPORTANT SAFETY INSTRUCTIONS

⚠ WARNING

Before using this product, please note:

1. The product should never be left unattended when plugged in, unplug from outlet when not in use.
2. Close supervision is necessary when this appliance is used by, on, or near children or individuals needing additional assistance.
3. Use this product only for its intended use as described in this manual. Do not remove cover: there are no serviceable parts inside.
4. Do not use attachments not recommended by manufacturer.
5. Never use this product on head, face, chest, stomach and osseous part (i.e. elbow, knee etc.).
6. Do not use excessive force when applying to the body.
7. Never place in or near fire or overheat this product.
8. Never use this product near a source of heat, such as heater. Never use while smoking.
9. Do not use this product under a blanket or pillow.
10. Never drop this product or subject it to impact.
11. Do not sit or lie on this product. Do not place a heavy item on top of this product.
12. Use only 100-240V AC for power supply.
13. Never modify or repair this product. Contact the distributor for assistance with warranty.
14. Never operate this product if it has a damaged cord or plug, if it is not working properly, if it has been dropped or damaged, or dropped into water, discontinue use and contact the distributor.
15. Keep the cord away from heated surfaces.
16. Do not carry this product by power cord or use cord as a handle.
17. Never drop or insert any object into any opening.
18. Do not operate where aerosol (spray) products are being used or where oxygen is being administered.
19. Do not touch the silicone vibrating head with sharp objects.
20. Do not use outdoors. Do not get product wet.
21. Never allow liquid to collect on or near the power adapter and adapter port.
22. Never use or leave in a place where water is splashed such as a bathroom, nor in a place with high humidity.
23. Never connect or disconnect the power adapter to/from the outlet with wet hands.
24. To disconnect, ensure the product is in the off position and then remove the plug from the outlet.
25. Keep long hair away from this product while in use.
26. Do not use this product in close proximity to loose clothing or jewelry.
27. Never operate on a soft surface such as a bed or couch where the air openings may be blocked.

Before using this product, please read this:

Failure to observe these instructions could result in electric shock, fire or short circuit of the product.

1. Never allow the adapter port to short circuit by contact with metals.
2. Never use a power cord or an adapter if they are damaged or if the plug doesn't appear to fit snugly in the outlet.
3. Never damage the power cord; do not unnecessarily bend, pull, twist, bind, place a heavy object on it, pinch, or wind around the adapter, etc.
4. Use only the adapter included with this product.

IMPORTANT SAFETY INSTRUCTIONS

WARNING

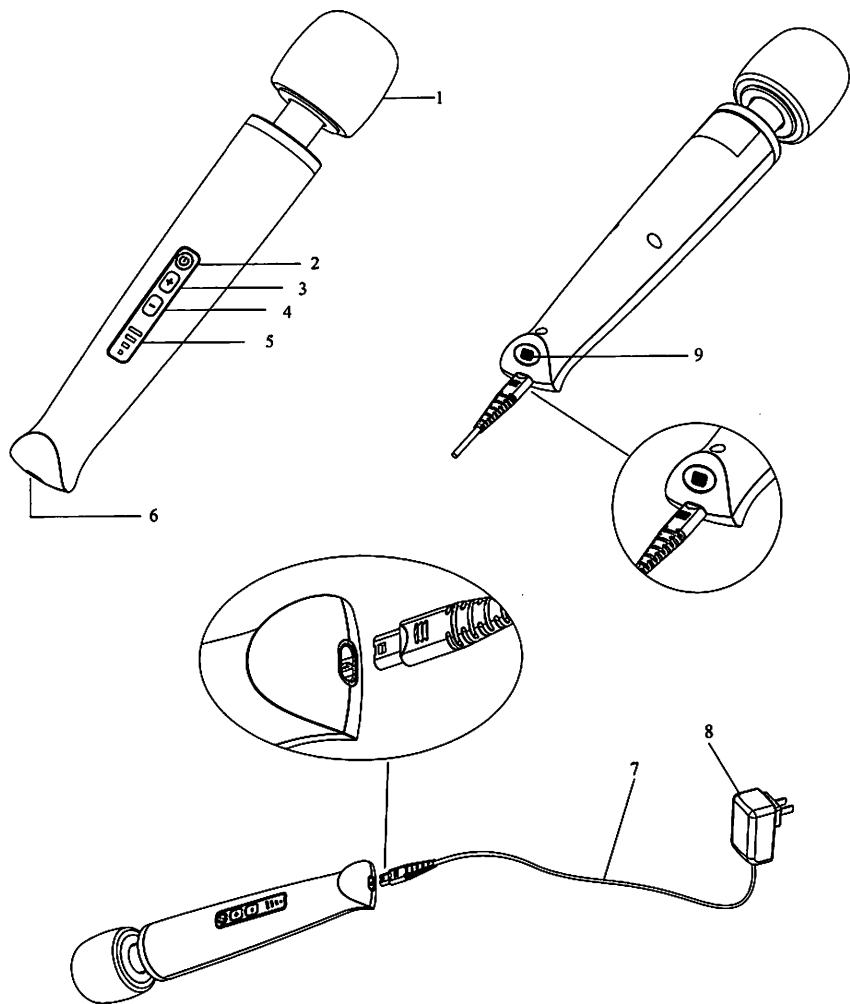
5. Never use the included adapter with other products.
6. Do not pull out the adapter by the power cord.
7. Regularly remove dust from the adapter using a dry cloth.
8. If any problem occurs, stop using this product immediately, turn it off and remove the adapter from the outlet.

CAUTION

1. Use for no more than 20 minutes at a time. Do not massage one area for more than 3 continuous minutes. This may cause adverse results or injury. After 20 minutes, turn the massager off and allow it to cool before turning it on again.
2. Do not use the product on your chest and or around your thyroid gland (just below the Adam's apple).
3. If you feel pain or experience any adverse reaction during or after use of this product, immediately stop using the product and consult a doctor.
4. Don't grasp the vibrating head while your massager is turned ON.
5. Don't use your massager over swollen or inflamed areas, or skin eruptions. Don't use on an unexplained calf pain. Whenever in doubt, consult your physician.
6. Be sure to turn the product off after use.
7. Do not use if any of these conditions apply: Very tired; Under the influence of alcohol; Suffering from eczema.
8. Do not use for an hour before or after eating.
9. Never use force to bend or twist the head of the product. Pushing the harder head to your body does not produce a stronger massage.
10. Never use this product together with, or at the same time as, another massager.
11. Be careful never to fall asleep with the product turned on.
12. Do not use creams, butters, oils, lotions or silicone-based lubricants on the product.
13. It is recommended that the product be used in temperatures from 0-35°C (32°-95° F) outside of this range the product may not operate properly.
14. Do not use abrasive cleaners or pads on the product.
15. Do not use alcohol, benzene, acetone or any liquid chemical cleanser on any part of the product.
16. In case of a power outage, be sure to remove the plug from the outlet.
17. To disconnect, ensure the product is in the off position and then remove the plug from the outlet by grasping the adapter, never by pulling on the cord.
18. After use, store the product in a place out of reach of children.

SAVE THESE INSTRUCTIONS

IDENTIFYING KEY PARTS



1. Vibrating Head
2. Power ON/OFF Button
3. Increase Intensity/Vibration Strength Button
4. Decrease Intensity/Vibration Strength Button
5. Intensity/Vibration Indicator Lights (Blue)
6. Adapter Port
7. Power Cord
8. Power Adapter
9. Lock Button

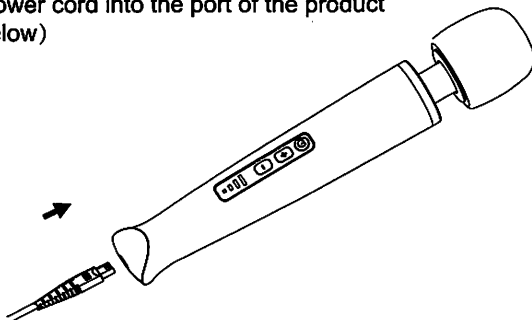
POWERING THE MAGIC WAND PLUS

This product is intended to be used while it is connected to an outlet. Use only the included power adapter, connected to a standard 100-240V AC electrical outlet.

Step 1. Ensure the product is not plugged in

Step 2. Insert the power cord into the port of the product

(See drawing below)

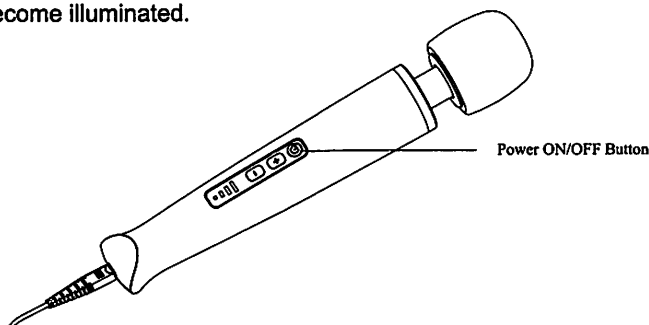


Step 3. Plug the power adapter into an outlet.

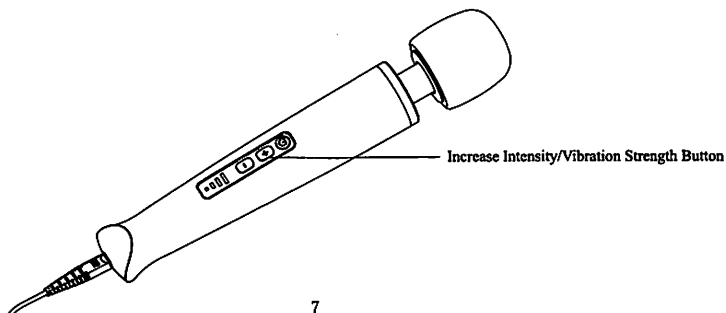
Step 4. Push the Power ON/OFF button.

OPERATING THE MAGIC WAND PLUS

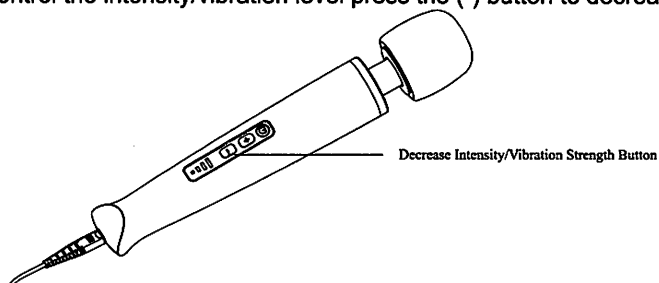
Step 1. Press the Power ON/OFF button to turn the massager on. The Intensity/Vibration Indicator light will become illuminated.



Step 2. To control the intensity/vibration level press the (+) button to increase the level accordingly.



Step 3. To control the intensity/vibration level press the (-) button to decrease the level accordingly.



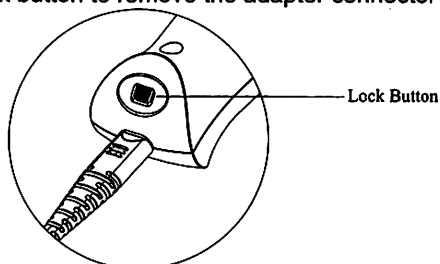
- There are 4 intensity/vibration levels. To adjust the intensity/vibration level, press the appropriate (+) or (-) button for desired setting. The blue intensity indicator lights will light up to show what intensity/vibration level you are using.

Intensity/Vibration Level Indicator Lights (Blue)	Level
—	1
— —	2
— — —	3
— — — —	4

Step 4. Gently apply massage head (spherical silicone portion) to desired body part for targeted relief.

Step 5. After use, press the Power ON/OFF button to turn off the product.

Step 6. Press and hold the lock button to remove the adapter connector from the product.



- The product will automatically shut off after approximately 20 minutes to protect it from overheating.

IMPORTANT NOTE: The product will automatically shut off after approximately 20 minutes to protect it from overheating. Allow product to cool before restarting.

**CAUTION - THE MASSAGER SHOULD NOT BE USED
OVER SWOLLEN OR INFLAMED AREAS OR SKIN ERUPTIONS.
DO NOT USE IN UNEXPLAINED CALF PAIN. CONSULT PHYSICIAN.**

IMPORTANT: Any individual who may be pregnant, has a pacemaker, suffers from diabetes, phlebitis, and/or thrombosis, is at an increased risk of developing blood clots due to recent surgery, or who has pins/screws or other medical devices in their body should consult with a physician before using a massaging device designed for home use.

CARE AND CLEANING

- Step 1. Ensure the product is turned off.
- Step 2. Ensure the product is unplugged from outlet.
- Step 3. The massager is NOT waterproof, keep away from water, and never immerse your massager. While unplugged, clean the wand head with a mild cleanser that is suitable for use on silicone items by placing the cleanser on a cloth and wiping the head of the unit along with the handle. Cleaning the product is recommended before and after each use. Do not use substances such as benzene, lacquer thinner or other volatile chemicals.

STORING THE MAGIC WAND PLUS

1. Ensure the product is turned off.
2. Ensure the product is unplugged from the outlet.
3. Ensure the adapter connector is removed from the product.
4. Store the product in a cool and dry place that is out of reach of children.
5. Avoid leaving the product in direct sunlight and never expose to extreme heat.
6. Store product the product in a place free from excessive humidity or dust/dirt.
7. Do not store the product in a location that will reach temperatures below 0° C (32° F).
8. Do not unnecessarily bend, pull, twist, bind, place a heavy object on it, pinch, or wind the power cord around the adapter or handle of the product.

SPECIFICATIONS

Specifications are subject to change without prior notice.

Maximum operating time	20 minutes
Power supply (Adaptor)	Input :AC100-240V 50-60Hz Output: 10V 1A
Weight	Main Body: Approx. 485g Adaptor: Approx. 100g
Dimension	Approx. 13" x 2.4"
Material	Main Body: ABS Plastic Head: Silicone
Adapter Cord Length	Approx. 6 feet (1.8 m)
Intensity/Vibration Strength	Level 1 - Approx. 2,700 vibrations per minute Level 2 - Approx. 3,800 vibrations per minute Level 3 - Approx. 5,400 vibrations per minute Level 4 - Approx. 6,300 vibrations per minute
Operating Temperature	Approx. 0°C ~35°C(32~95°F)


NOTICE

Under certain circumstances, such as high altitude or low temperatures, the product may not achieve optimal performance.

TROUBLESHOOTING

If you experience any problem with the massager, stop using it immediately and turn it off. Consult the troubleshooting guide below. If the problem is not resolved, contact the distributor for further assistance.

Issue	Possible Causes	Steps to Resolve
No movement when switched "ON" No vibration occurs when power ON/OFF button is pressed to ON position, indicator light not illuminated.	1. The power adapter may not be plugged into a working outlet. 2. The power cord may not be fully inserted into the port on the wand.	1. Firmly insert the plug from the power adapter into a working outlet. 2. Check and firmly push the power cord into the port on the wand.
No vibration occurs when in the ON position and indicator light IS illuminated.		Unplug the wand and contact the distributor for assistance.
The product shuts off during usage.	1. The product will automatically shut off after 20 minutes to prevent overheating. 2. If the product shuts off PRIOR to 20 minutes of use:	1. Allow the wand to cool down then resume normal use. 2. Unplug the wand and contact the distributor for assistance.
The motor makes a sound.	1. If a sound is heard while the product is running, this is normal. 2. If a severe rattle can be heard and no vibrations felt.	1. It is the sound of the components working properly. 2. Unplug the wand and contact the distributor for assistance.

 WARNING	1. If you believe there is a problem with your massager, if it is damaged or deformed, stop using it immediately and turn it off and unplug from the outlet. Contact the distributor for further assistance. 2. If after consulting the Trouble Shooting Guide the massager still doesn't function properly, contact the distributor for further assistance. 3. Never attempt to modify this product in any way. This may result in personal injury, cause fire or electric shock.
---	--

WARRANTY

The Magic Wand is backed by a one-year limited warranty. If you have questions concerning the Magic Wand, or if your massager isn't functioning properly, please visit:
<http://magicwandoriginal.com/warranty>

Do not attempt to repair the Magic Wand yourself.

LIMITED WARRANTY

This item is warranted to be free from defects in materials or workmanship for a period of one year from the original date of purchase under normal conditions of intended use. If this product is defective, Warrantor will, within the warranty period, replace the product. This warranty extends only to the original retail purchaser and excludes any damage to the product resulting from accident, misuse, abuse, damage caused by electrical power surge, or operation not recommended or authorized by these operating and safety instructions. This warranty is voided if the product is ever used in a commercial or business environment.

There are no warranties beyond this limited warranty. This limited warranty is your complete and exclusive remedy. Warrantor makes no other warranties, express or implied, including but not limited to any implied warranty of merchantability or of fitness for a particular purpose. Warrantor undertakes no responsibility for the quality of the product except as otherwise provided herein. Warrantor assumes no responsibility that the product will be fit for any particular purpose for which you may be buying this product. Warrantor expressly disclaims liability for any special, incidental, indirect, or consequential damages arising from the purchase or use of this product.

The amount of Warrantor's liability under this warranty is limited to the amount of the original purchase price paid for the product by the original retail purchaser. If Warrantor cannot lawfully disclaim statutory or implied warranties, then all such warranties shall be limited to the duration of this warranty and to the amount of the original purchase price paid for the product by the original retail purchaser.

This warranty gives you specific legal rights; you may also have other rights that vary by jurisdiction. This warranty is valid only within the United States of America (USA).

WARRANTY CLAIM PROCEDURE

If you believe you have a warranty issue, or if your massager isn't functioning properly, please follow these steps:

1. Visit <http://magicwandoriginal.com/warranty>
2. Prepare to submit your claim by gathering images of your product and original proof of purchase.
3. Carefully follow instructions to complete the online claim form.
4. Following your submission, the warranty team will contact you to request additional information or provide disposition and next steps.

Distributed by Vibratex, Inc.

Phone: 1.888.558.9778

Email: contact@MagicWandOriginal.com



For more information, please visit www.MagicWandOriginal.com

Distributed by Vibratex, Inc.

1.888.558.9778

contact@MagicWandOriginal.com